

WEB-EXCLUSIVE HOME TOUR

# Tour a Whimsical and Spacious Upper East Side Home for a Family of Eight

The duplex, which features 360-degree views, is “a place to have fun”

By Alia Akkam

Photography by Richard Powers

Styled by Sara Golden

January 12, 2024



A New York couple keen for a fresh, uplifting start had a whopping eight children between them, so they were easily enthralled by a spacious Upper East Side duplex with 360-degree panoramas of the city to boot. For this significant union, they called upon local designer Fawn Galli, whose eponymous firm collaborated with architect Andrew Magnes and Highline Construction Group to conjure a bi-level abode that exudes joy and personality at every turn.

“It’s a place to have fun. There are sofa beds coming out of the walls, iconic New York buildings in the background, and places to gather and celebrate being together,” says Galli. “Through the colors and the fabrics, the tone is ‘let’s enjoy our life through an inspiring home.’”

Galli wanted the parents and roving brood (the youngest is 11; the oldest are in college) to be surrounded by whimsy, but she was also eager to honor the location, orchestrating vignettes that maximize vistas from the walls of glass on the perimeter and encouraging time spent on the terraces by dotting them with outdoor furniture. Off the elevator, the corridor leading to the apartment is dark and saturated, but once you step inside, “it’s almost like you’re in a cloud,” Galli points out. “The darkness releases into the light and the views and terrazzo floors bring you in.”

A sense of duality permeates the residence. In the living room, for example, reupholstered Soho Home chairs effortlessly blend with a custom Fawn Galli

Interiors rug and sofa, while the mustard-tinted Moooi wingback chair in the office contrasts with a playful pink fringed Llott Llov table lamp. Throughout, furnishings are frequently in dialogue with motley artworks curated by Samuels Creative & Co. and tomes assembled by Dashwood Books.

“This is what I do with a lot of my work—traveling from contemporary to traditional and mixing different styles and price points,” explains Galli.

On the first floor, which houses the living spaces, architect Magnes developed the plan around a central hub “designed as an expansive piece of tautly detailed, stained anigre cabinetry,” he says. “The core was not only designed to bring continuity and residential warmth throughout the lower-level spaces, but was programmed to contain storage, two powder rooms, a guest bathroom, mechanical equipment, the kitchen, two staircases, front and rear apartment entries, and the wet bar.”

This floor is devoid of hallways, so Magnes, sensitive to rooms that want definition yet flow into each other, he continues, created large hidden swing, pocket, and telescoping doors, “providing ways to close down space for privacy and intimacy.” Given the post-war building’s concrete slab construction, it was difficult to move and install elements, but Magnes was able, per the clients’ wishes, to transform the former living room into a kitchen overlooking Central Park by hiding the plumbing within the sculptural plaster ceiling.

Various areas—including the groovy media room, lively family room, and games table situated underneath a spinning disco ball—encourage a range of activities. A dining table capable of seating 15 people for large, convivial feasts was nonnegotiable, but Galli was also considerate of those evenings when just two people would be sitting alone at a long table. The solution? A smaller round one topped in bespoke laminated blue glass. “The colored glass feels magical,” she muses.

Upstairs are the bedrooms, where hand-painted Pictalab wallpaper pressed into the recessed panels of the dressing room doors makes a fantastical splash in the primary suite. “There are so many patterns in this room because as I always say, things shouldn’t match, they should go. I like a bit of clashing in a way that feels polished and intentional, like the ’80s glam vibes with India Mahdavi’s bedside tables,” Galli elaborates.

That brazen spirit mirrors the energy below. Without a wood floor or heaps of drapery

to warm the vast amounts of glass, Galli was careful to ensure each maximalist space was grounded with cozy textiles and minimalist furniture.

“Obviously I wanted it to be chic, but there are also unexpected elements, like the cherries on the fabric in the playroom, that wake up the senses. Or even if you’ve seen the Campana Brothers sofa before, it’s used in a new way, juxtaposed with something else,” she shares. “It’s an expression of vitality as much as it is happiness.”



Art: Hannah Taurins/Theta, New York

1/14

Fawn Galli Interiors designed the tactile rug and curving sectional in the family room. Wrapped in Pierre Frey's Le Jardin du Palais fabric, the latter is complemented by the clients' own burnt orange swivel chair and the Lorenza Bozzoli Couture ottoman from The Craftcode accessorized with a Crate & Barrel tray. Further heightening the nook is a chandelier from Auchincloss Lighting, Paolo Franzin's sconce for Leucos, and a gouache-and-colored-pencil work by artist Hannah Taurins.





2/14

In the moody media room, the commodious Roche Bobois custom Mah Jong sectional surrounds Konstantin Grcic's Diana A side table for M2L Furniture and organic oak coffee table set. Additional jolts of color from Prokast's deep-blue-painted millwork and Lorenza Bozzolli Couture's dark green pouf are balanced with the neutral-toned Fawn Galli Interiors rug, RBW sconces, and Dedar window treatments.



3/14

Suspended over the ping-pong table is Morghen Studio's undulating Itaca chandelier from Salon Design. These frequent games are elevated by a Benisouk Moroccan rug underfoot, botanical Eskayel wallpaper, and a bench cushion swathed in Pierre Frey fabric. The large window area, done up in Benjamin Moore's teal and onyx hues, is capped off with Malhia Kent Roman shades.





4/14

A botanical powder room makes for a leaf-filled interior.

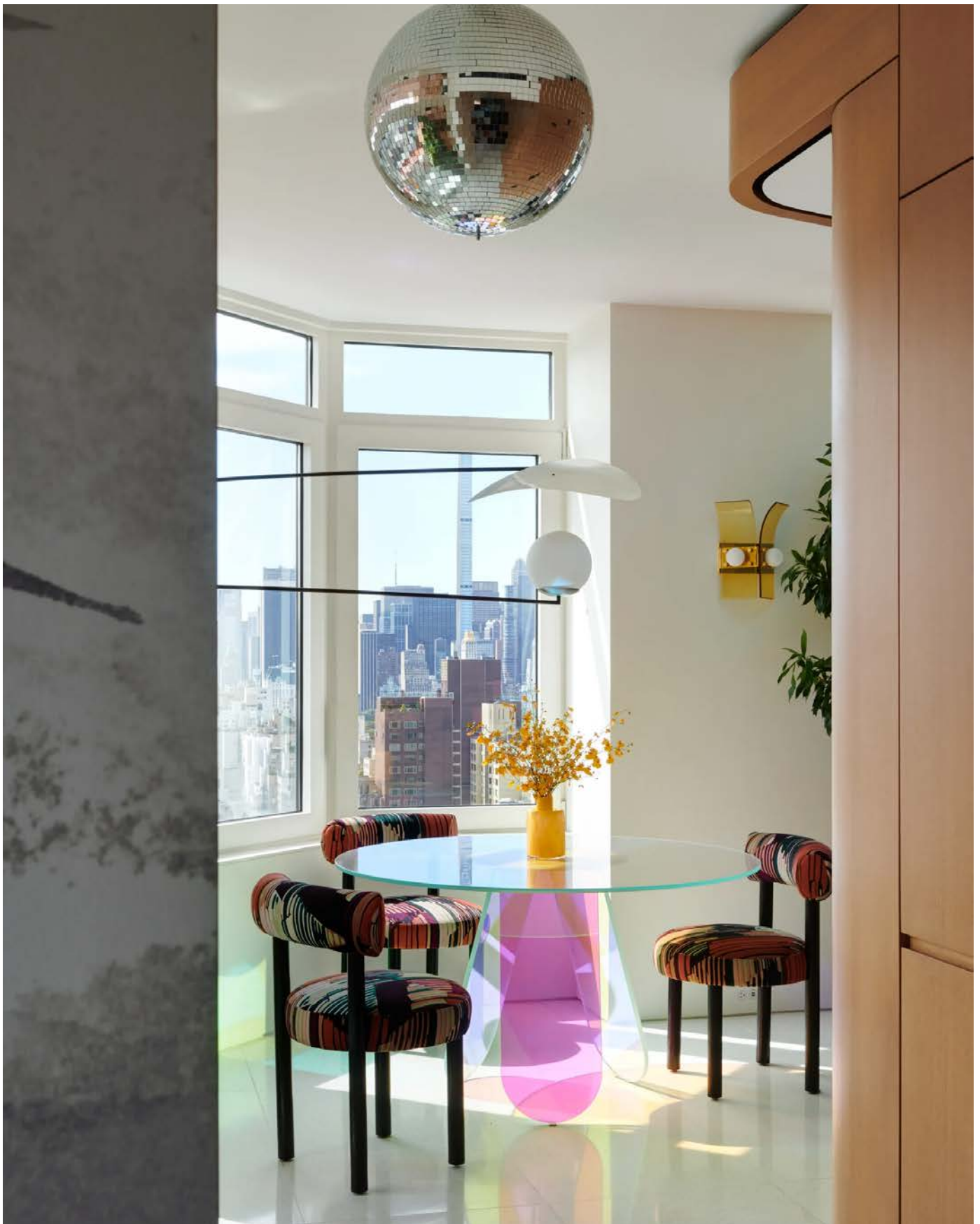


Art: © Nan Goldin

5/14

One of the duplex's highlights is the central core, a showcase of anigre veneer millwork that is the handiwork of Lawler Woodwork, Walter's Custom Cabinetry, and Designs by Robert Scott. This expanse is brightened by a Zuber wallpaper mural and an archival pigment print of Nan Goldin's 1983 *"Variety" booth, NYC*, underneath which rests a duo of Lulu and Georgia stools.





6/14

Patricia Urquiola's Shimmer table for Glas Italia, sourced from Avenue Road, is energized by Artistic Frame chairs shrouded in Laura Gonzalez's Palla fabric for Pierre Frey, Anna Karlin's Sun Shade swing-arm sconce, and a kitschy disco ball from B&H Photo.



7/14

A bar area includes plenty of space for glassware.





8/14

On the back stairs, a vibrant nettle runner by Fawn Galli Interiors matches Pierre Frey's bold Brutalist wallpaper.





Art: Josh Jefferson/Woaw Gallery

9/14

Pictalab's hand-painted Pop Garden wallpaper from Salon Design animates the primary suite's dressing room doors. The dreamy aesthetic continues with Dedar's Silkbird jacquard behind the Fawn Galli Interiors-designed bed, India Mahdavi Scott bedside tables from Ralph Pucci, and monumental vintage Lucite sconces. Near the window shaded by Dedar drapery, the union of Christian Siriano's ivory bouclé and wood Leo bench and artist Josh Jefferson's *Inter-Orbital Bird* painting creates a calming vignette.



10/14

Icy blue stone contrasts with the electric golds of this bathroom.





11/14

The walk-in shower features a view.





Art: © Katherine Bernhardt/David Zwirner, and Canada

12/14

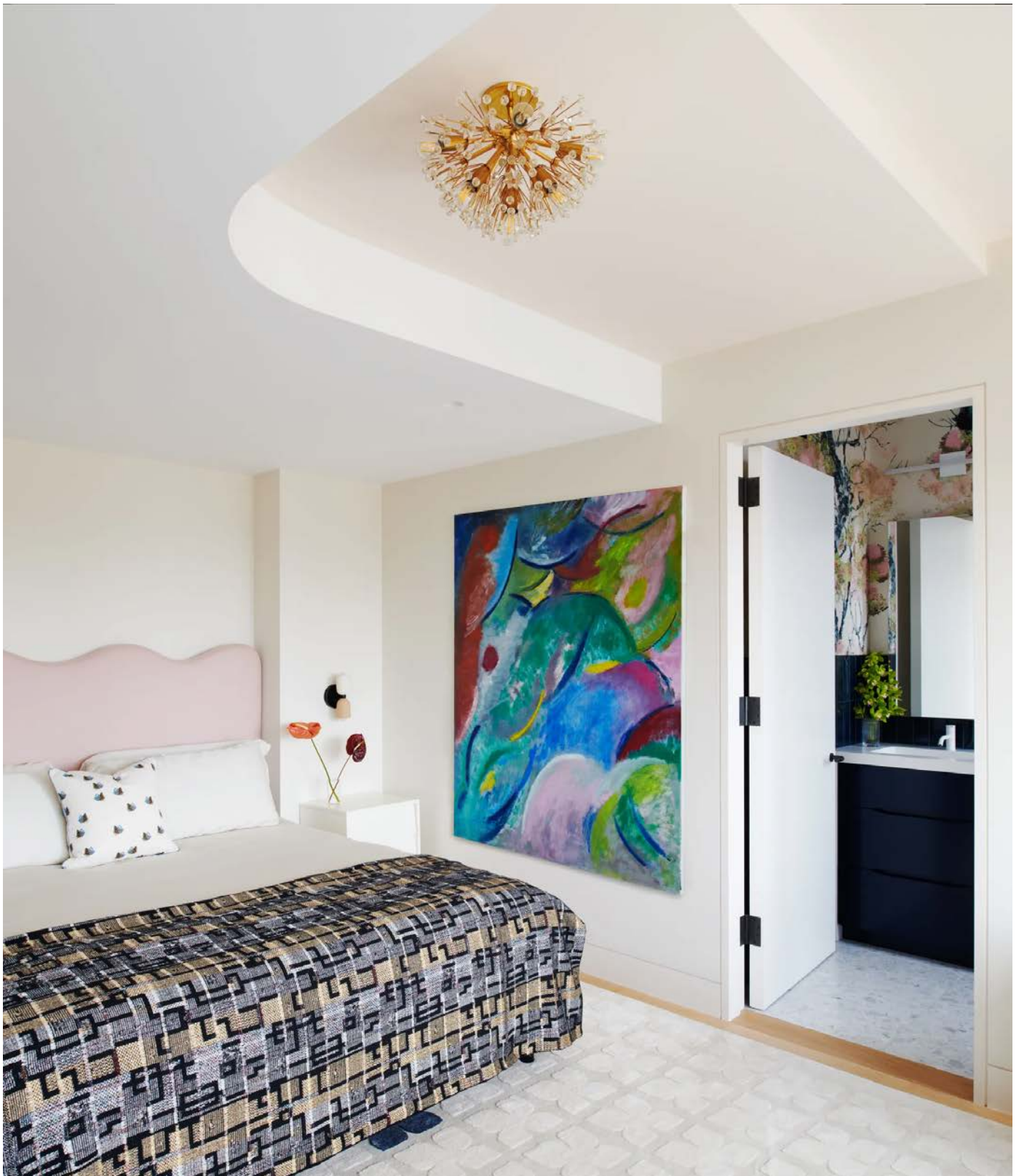
West Elm's Camilla bed, complete with storage and strewn with a Wolf & Badger throw, is married with Leanne Ford's Cortez floating nightstands for Crate & Barrel and Eskayel oyster linen drapery in one of the children's bedrooms. Artist Katherine Bernhardt's Chroma lithograph plays off A-N-D's Vine ceiling light and Blu Dot sconces.



13/14

A window seat features a stunning glimpse of the Manhattan skyline.





Art: An Hoang/TURN Gallery

14/14

Beside the Lulu and Georgia Clementine platform bed draped in Holland & Sherry fabric in another of the children's bedrooms are West Elm Pippa nightstands, Lightology sconces, and artist An Hoang's large-scale painting *Midnight Mountain*. Glittering on the ceiling is a 1950s Rupert Nicoll snowflake chandelier, while Timorous Beasties wallpaper beckons from the adjoining bathroom.